

F. EXAMPLE PROJECTS WHICH BEST ILLUSTRATE PROPOSED TEAM'S QUALIFICATIONS FOR THIS CONTRACT <i>(Present as many projects as requested by the agency, or 10 projects, if not specified. Complete one section F for each project.)</i>		20. EXAMPLE PROJECT KEY NUMBER
21. TITLE AND LOCATION <i>(City and State)</i> Spring Arbor University – Master Drainage Plan and Parking Lot Expansion Spring Arbor, Michigan		22. YEAR COMPLETED PROFESSIONAL SERVICES 2003 CONSTRUCTION <i>(If applicable)</i> N/A

23. PROJECT OWNER'S INFORMATION

a. PROJECT OWNER Spring Arbor University	b. POINT OF CONTACT Mr. Doug Jones	c. POINT OF CONTACT TELEPHONE NUMBER
---	---------------------------------------	--------------------------------------

24. BRIEF DESCRIPTION OF PROJECT AND RELEVANCE TO THIS CONTRACT *(Include scope, size and cost)*

SCOPE OF WORK

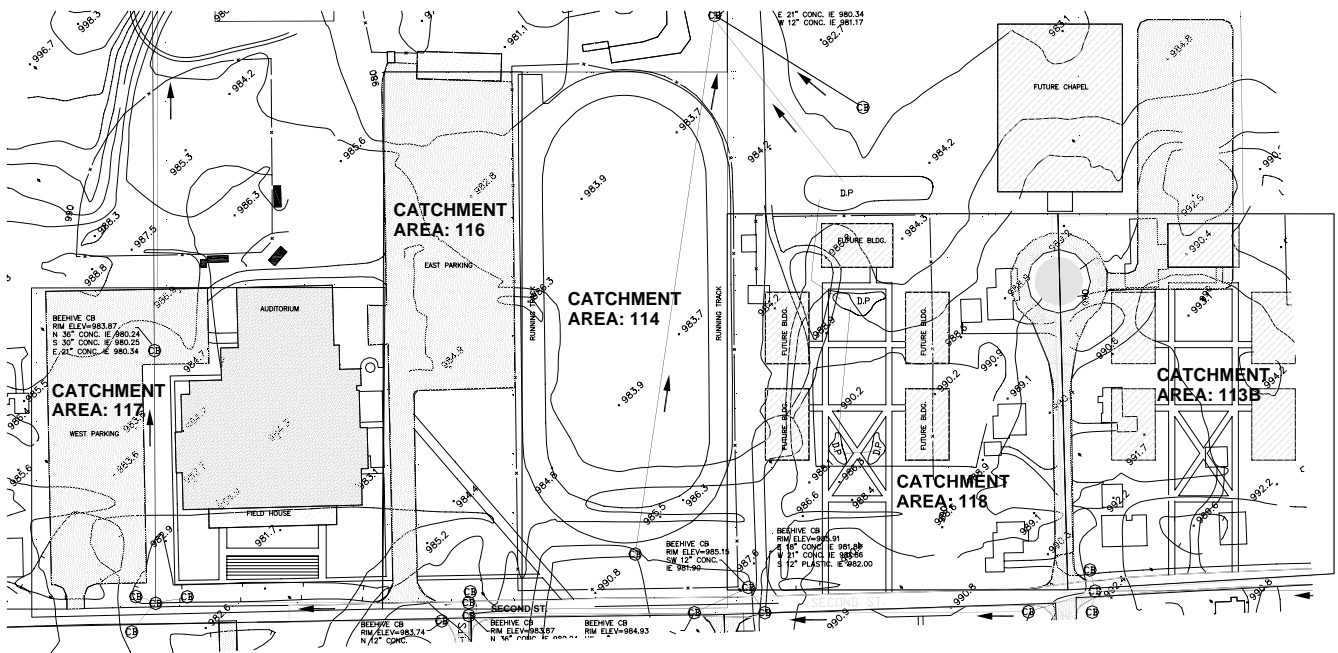
The University was required to develop a Master Drainage Plan before it could take up any further building construction on its 100-plus acre campus. There was a small drainage infra-structure along three streets and discharge was trained to a county drain; but a new directive restricted the total discharge going to the drain. The engineering fee for the project was \$60,000.

RELEVANCE

Elite is experienced in the design and implementation of overall site drainage plans and flood plain analysis. When upgrading municipal facilities, we not only take into account the immediate area, but also the overall impact on the complete drainage system for the site.

DEVELOPMENT OF MASTER DRAINAGE PLAN INCLUDED

- Develop drainage plan impact of restricted flow to County drain.
- Topographical survey and develop an economic flow path.
- Hydrological evaluation for this area for 10-yr, 20-yr, 50-yr and 100-yr events.
- Evaluate impact of existing and planned construction - ground flow and soil absorption analysis.
- Evaluate adequacy of existing system and incorporate the same into master plan.
- Develop retention and detention basin and drainage network for several storm event considerations.
- Review the master plan with township and county authorities and follow-up for approval of the master plan.
- Design parking lot expansion to add 133 spaces to a 170 space lot and incorporate the design into the master drainage plan.



CATCHMENT AREA – PARTIAL PLAN

P-000120

25. FIRMS FROM SECTION C INVOLVED WITH THIS PROJECT

a.	(1) FIRM NAME Elite Engineering Services, Inc.	(2) FIRM LOCATION <i>(City and State)</i> Jackson, MI	(3) ROLE Project Engineer
----	---	--	------------------------------