

F. EXAMPLE PROJECTS WHICH BEST ILLUSTRATE PROPOSED TEAM'S QUALIFICATIONS FOR THIS CONTRACT <i>(Present as many projects as requested by the agency, or 10 projects, if not specified. Complete one section F for each project.)</i>		20. EXAMPLE PROJECT KEY NUMBER
21. TITLE AND LOCATION <i>(City and State)</i> Jackson Transit Authority - Maintenance Facility Phase II Jackson, Michigan		22. YEAR COMPLETED PROFESSIONAL SERVICES 2004 CONSTRUCTION <i>(If applicable)</i> 2004

23. PROJECT OWNER'S INFORMATION

a. PROJECT OWNER Jackson Transit Authority	b. POINT OF CONTACT Oliver Lindsay	c. POINT OF CONTACT TELEPHONE NUMBER
24. BRIEF DESCRIPTION OF PROJECT AND RELEVANCE TO THIS CONTRACT <i>(Include scope, size and cost)</i>		

SCOPE OF WORK

Elite as part of the Design-build team, provides A/E services on the projects to include all discipline design & engineering services, client coordination and field engineering support & management, cost & schedule monitoring and construction quality control.

The project construction in this Phase II includes a bus-wash facility, a detailing facility and a paint booth to supplement a fueling terminal. It presents a modern version of a transportation maintenance facility.

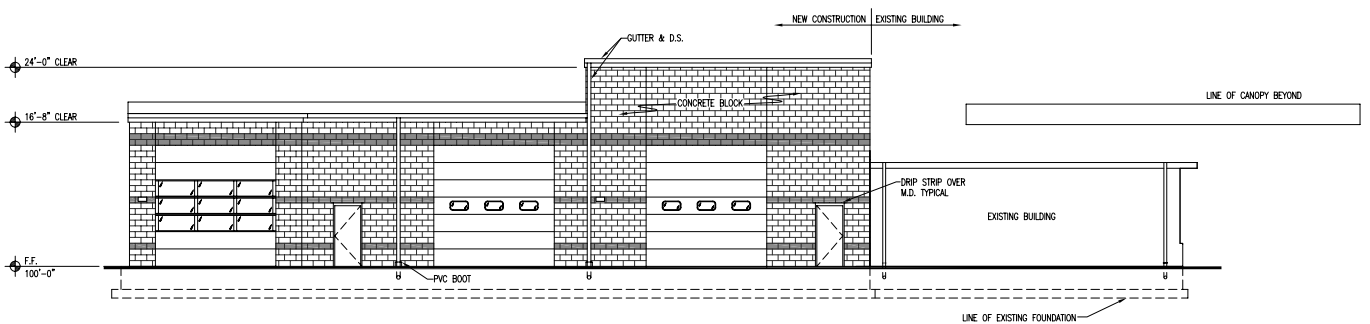
Elite provided architectural plans, civil & structural designs, HVAC designs, power up-grade and electrical distribution plans, piping and underground utilities, and a discharge from the facility to city sewer system.

The project cost of Phase II is approximately one million dollars.

RELEVANCE

Elite has an opportunity to present a very economic facility designs and participate in value engineering for further cost cutting measures.

- Type A: Services included developing scope of work, cost and scheduling.
- Type B: Services included architectural design, mechanical/piping design, site design and connection to existing site utilities.
- Type C: Services included engineering oversight on the project.



SOUTH ELEVATION

P-000134

25. FIRMS FROM SECTION C INVOLVED WITH THIS PROJECT

a.	(1) FIRM NAME Elite Engineering Services, Inc.	(2) FIRM LOCATION <i>(City and State)</i> Jackson, MI	(3) ROLE Project Engineer
----	---	--	------------------------------