

F. EXAMPLE PROJECTS WHICH BEST ILLUSTRATE PROPOSED TEAM'S QUALIFICATIONS FOR THIS CONTRACT <i>(Present as many projects as requested by the agency, or 10 projects, if not specified. Complete one section F for each project.)</i>		20. EXAMPLE PROJECT KEY NUMBER
21. TITLE AND LOCATION <i>(City and State)</i> Selfridge Air National Guard Base Michigan		22. YEAR COMPLETED PROFESSIONAL SERVICES 2005 CONSTRUCTION <i>(If applicable)</i> N/A

23. PROJECT OWNER'S INFORMATION

a. PROJECT OWNER Anzaldua Mechanical, Inc.	b. POINT OF CONTACT Jesse Anzaldua Sr.	c. POINT OF CONTACT TELEPHONE NUMBER
24. BRIEF DESCRIPTION OF PROJECT AND RELEVANCE TO THIS CONTRACT <i>(Include scope, size and cost)</i>		

SCOPE OF WORK

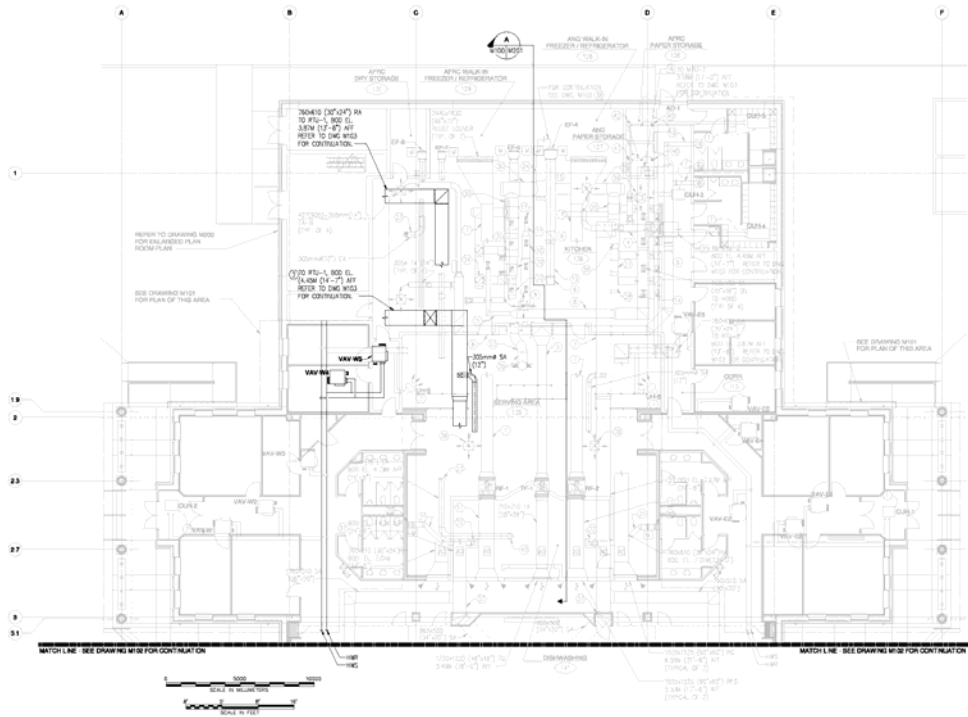
Provide A/E Services to the prime contractor for the construction of Michigan Air National Guard Joint Dining Facility, Selfridge Air National Guard Base.

- A/E Services provided for the Joint Dining Facility:
- Preparation of HVAC system shop drawings for installation of ducts and equipment.
- Prepare procedures for HVAC systems commissioning.
- Witness and record commissioning of the HVAC systems operation.
- Prepare final HVAC commissioning report.
- Prepare final HVAC system drawings.

The size of the facility was 22,395 sq. ft. with a consulting engineering fee of \$28,000.

RELEVANCE

The Joint Dining Facility design at Selfridge Air Nation Guard Base incorporates the most modern standards for architectural engineering and automated controls of HVAC systems. Elite provided the engineering oversight for contractor's work and helped complete commissioning of the HVAC system.



PARTIAL HVAC PLAN

P-000135

25. FIRMS FROM SECTION C INVOLVED WITH THIS PROJECT

a.	(1) FIRM NAME Elite Engineering Services, Inc.	(2) FIRM LOCATION <i>(City and State)</i> Jackson, Michigan	(3) ROLE Subcontractor for HVAC Engineering and commissioning.
----	---	--	---