

<b>F. EXAMPLE PROJECTS WHICH BEST ILLUSTRATE PROPOSED TEAM'S QUALIFICATIONS FOR THIS CONTRACT</b> <i>(Present as many projects as requested by the agency, or 10 projects, if not specified. Complete one section F for each project.)</i>	20. EXAMPLE PROJECT KEY NUMBER
-----------------------------------------------------------------------------------------------------------------------------------------------------------------------------------------------------------------------------------------------	--------------------------------

21. TITLE AND LOCATION <i>(City and State)</i> Install water main back flow preventer; Aleda E Lutz VA Medical Center Saginaw, MI	22. YEAR COMPLETED <table border="1" style="width:100%; border-collapse: collapse;"> <tr> <td style="width:50%; text-align: center;">PROFESSIONAL SERVICES 2006</td> <td style="width:50%; text-align: center;">CONSTRUCTION <i>(If applicable)</i> N/A</td> </tr> </table>	PROFESSIONAL SERVICES 2006	CONSTRUCTION <i>(If applicable)</i> N/A
PROFESSIONAL SERVICES 2006	CONSTRUCTION <i>(If applicable)</i> N/A		

<b>23. PROJECT OWNER'S INFORMATION</b>		
----------------------------------------	--	--

a. PROJECT OWNER Veteran Administration	b. POINT OF CONTACT Carole Soule	c. POINT OF CONTACT TELEPHONE NUMBER
--------------------------------------------	-------------------------------------	--------------------------------------

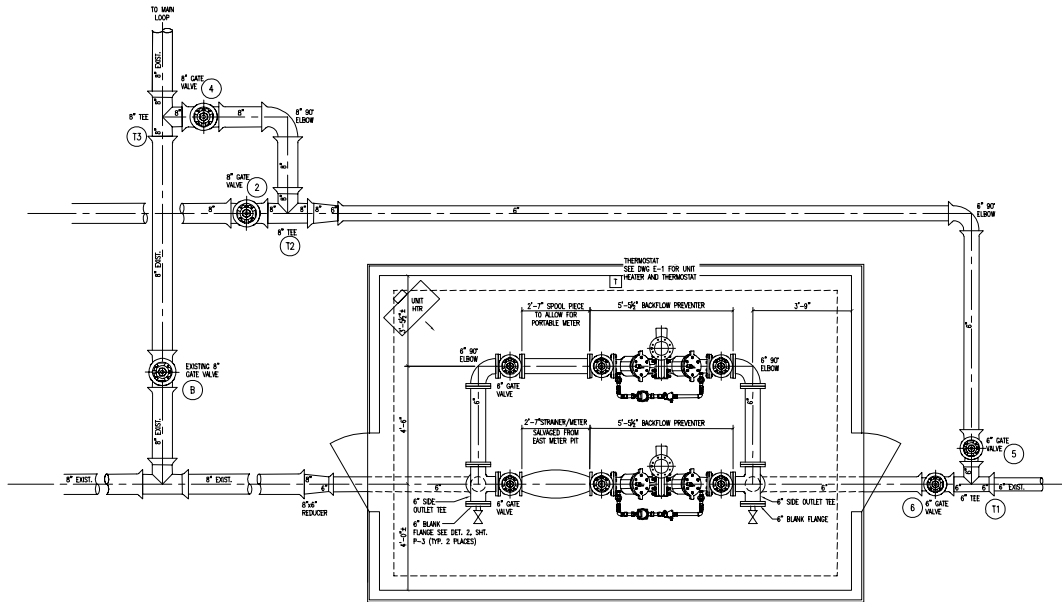
<b>SCOPE OF WORK</b>	<b>RELEVANCE</b>
----------------------	------------------

A/E services to fully develop construction documents (Construction drawings, specifications, cost estimates) to install water main and back flow preventer. Services included:

- Design to construct the installation of an above grade back low preventer and related utilities,
- Design modification to existing VA medical Center water main inlet from below grade to above with meter, back flow preventer and pass loop utilizing existing hardware,
- Design the controls to interface with existing control system to monitor the temperature in the enclosure in relation to the outside temperature,
- Provide construction documents to install new water main and back flow (east) while utilizing redundant system (west).
- Provide guidelines for demolishing the underground water metering pits and restoration of the area

Provide A/E services for modification of water main inlet to the VA medical center without interruption of services to the facility. The services provided for utilization of salvaged materials. Design of a system with above ground metering room was done in compliance the VA requirements.

Provide all construction drawings and specification in accordance with VA requirements



**METER HOUSE PIPING PLAN**

P-000137

<b>25. FIRMS FROM SECTION C INVOLVED WITH THIS PROJECT</b>		
------------------------------------------------------------	--	--

a.	(1) FIRM NAME Elite Engineering Services, Inc.	(2) FIRM LOCATION <i>(City and State)</i> Jackson, Michigan	(3) ROLE Project Engineer
----	---------------------------------------------------	----------------------------------------------------------------	------------------------------