

F. EXAMPLE PROJECTS WHICH BEST ILLUSTRATE PROPOSED TEAM'S QUALIFICATIONS FOR THIS CONTRACT <i>(Present as many projects as requested by the agency, or 10 projects, if not specified. Complete one section F for each project.)</i>		20. EXAMPLE PROJECT KEY NUMBER
21. TITLE AND LOCATION <i>(City and State)</i> Pinewood Estates – Site Development Plan Grass Lake, Michigan		22. YEAR COMPLETED PROFESSIONAL SERVICES 2006 CONSTRUCTION <i>(If applicable)</i> N/A

23. PROJECT OWNER'S INFORMATION

a. PROJECT OWNER Chelsea Modular Homes	b. POINT OF CONTACT Stephen Jahn	c. POINT OF CONTACT TELEPHONE NUMBER
---	-------------------------------------	--------------------------------------

24. BRIEF DESCRIPTION OF PROJECT AND RELEVANCE TO THIS CONTRACT *(Include scope, size and cost)*

SCOPE OF WORK

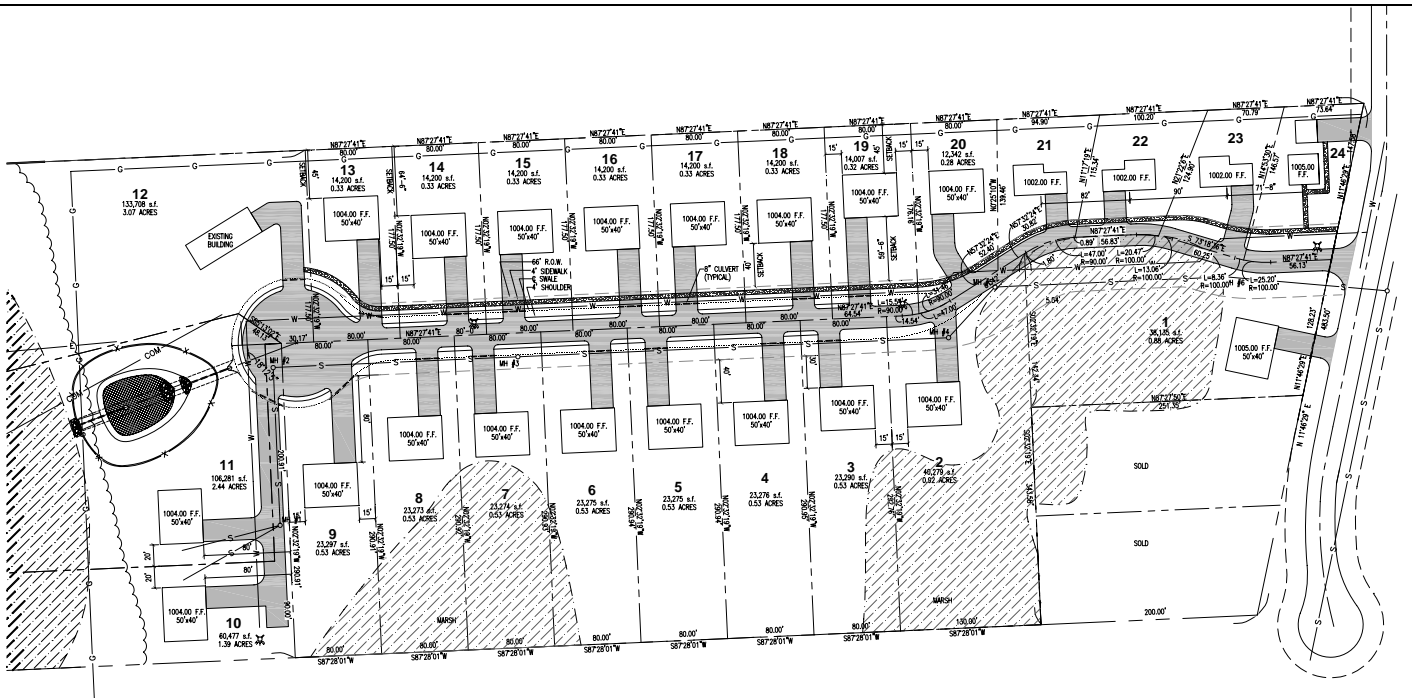
A/E services to develop site development plan for 24 modular homes on a 17-acre lot.

- Boundary and topographical surveys of the existing site.
- Environmental study to include wetland delineation and permitting with the MDEQ.
- Design of a new private road to provide access to the units.
- Storm water detention and drainage design.
- Gravity sewer design to connect to new City sewer. Coordination was necessary with the City Engineer to ensure operation with their new design.
- Site lighting and electrical distribution.

RELEVANCE

Type A services performed on this project included surveying, soil testing, wetland delineation and flood plain analysis and development of project scope.

Type B services performed on this project included site design, road design, storm water detention and drainage design, sewer design, project cost estimates and interaction with the village and MDEQ to obtain the proper permits.



PARTIAL SITE PLAN

P-000138

25. FIRMS FROM SECTION C INVOLVED WITH THIS PROJECT

a.	(1) FIRM NAME Elite Engineering Services, Inc.	(2) FIRM LOCATION <i>(City and State)</i> Jackson, Michigan	(3) ROLE Project Engineer
----	---	--	------------------------------